

Prepared By: Jennifer Rose
Email: jenniferrose@firedex.com
Quote: Darley Proximity FXA BL852-FXAPROXQ CCD / BL853
FXAPROXQTCPD
FWID: 24422
Item: Proximity FXA Coat & Pant
Contract: FireWriter 2019



COAT SPECIFICATIONS

Coat Outer Shell: 32" Coat with DRD, 7.5 oz Aluminized Basofil / Para-Aramid, Aluminized
Coat Thermal Liner: (Q) 8.0 oz Q-8™
Coat Moisture Barrier: (T) 5.2oz Stedair® 3000
Coat Closures: XC40 Zipper / Woven Hook and Loop

COAT PATTERN, LINER, PATCHES AND LABELS OPTIONS

560T Added Thermal Reinforcement on Yoke

COAT REINFORCEMENTS

Knit Wrist Reinforcement: XMNK Standard Knit Wrist, Nomex® (White)
Cuff Reinforcement: Standard Cuff, Grey, Leather
Shoulder Reinforcement: No Reinforcement, Main Shell Material
Elbow Reinforcement: No Reinforcement

COAT MIC CLIPS AND STRAPS

XMCLP Mic Clip: 1" x 2" Shell Material
Left Qty: 1

COAT POCKETS

Chest Pocket - Left: (XP02) Radio Pocket 7 x 3 x 2
Single Notch
Hand Pocket - Left: (XP01) Patch Pocket 10 x 10"
Hand Pocket - Right: (XP01) Patch Pocket 10 x 10"

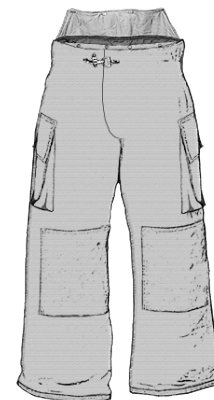
PANT SPECIFICATIONS

Pant Rise: Low Rise
Pant Rear Panel: 3" Rear Panel
Pant Outer Shell: 7.5 oz Aluminized Basofil / Para-Aramid - Aluminized
Pant Thermal Liner: (Q) 8.0 oz Q-8™
Pant Moisture Barrier: (T) 5.2oz Stedair® 3000
Pant Closures: XC50 Woven Hook and Loop / Hook & D

PANT SUSPENDERS

MCHL - Post Attachment, H-Back, Black Webbing, Padded with Ladder Lock (Max Length: 54")

PRODUCT PREVIEW



This preview is for illustrative purposes only. Not all options may be shown in the preview. Not all options shown may be to the correct scale of the garment and may not be attached in the exact location shown.

PANT STRAPS AND OPTIONS

XM54 Takeup Strap: Shell with Thermoplastic Buckle (Select up to 2 on pant free of charge)

Left Qty: 1, Right Qty: 1

PANT POCKETS

Front Pocket - Left: (XP30) Full Bellow 10 x 10 x 2

Front Pocket - Right: (XP30) Full Bellow 10 x 10 x 2

PANT REINFORCEMENTS

Knee Reinforcement: Knee Patches, 10 x 8", Main Shell Material, Main Shell Color

Cuff Reinforcement: DexCuff - Reverse Tapered Cuff, Shell Material, Main Shell Color

TPP (Before Washing, NFPA minimum = 35)	THL (NFPA Minimum = 205)
45.20 cal/cm ²	0.00 W/m ²