

DARLEY OFFERS END TO END SOLUTIONS FOR YOUR AGENCY'S ROBOTICS PROGRAM

There is more to a successful drone program than just purchasing equipment. Our experienced team will help guide your agency through the different regulatory requirements, training, equipment selection, and policy review.

EQUIPMENT

Working with industry leading manufacturers, we have solutions to fit all needs and budgets. Equipment listed in this brochure is a small sample of what we offer. If you are unsure on the different equipment available, please reach out to us to learn about the differences in the different systems.

TRAINING

We understand that utilizing new technology can be daunting. Thankfully, our network of trainers have been working with public safety to develop the most practical training methods. Training can be customized and includes, but is not limited to the following:

- Part 107 course
- Basic public safety training
- Advanced public safety training
- **Specialty Training:** Scene reconstruction, 5-Day integration into law enforcement, UAS in crisis negotiations, UAS in search & rescue
- Additional customer requests

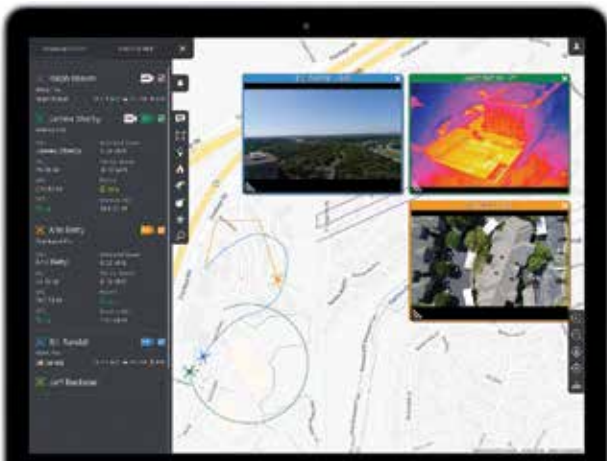
SUPPORT AND OPERATING PROCEDURES

Having a network of departments using and learning these new technologies helps create the framework needed to start your own Standard Operating Procedures without the need to reinvent the wheel. We will assist with outlining your SOPs and continue to support your program beyond just equipment selection.

REGULATIONS AND FAA REQUIREMENTS

Want to learn how your department can obtain a Certificate of Authorization from the FAA? Darley is pleased to recommend Skyfire Consulting to help with your department's legal services. These services include, but are not limited to:

- Certificate of Authorization (COA) Processing - Blanket & Jurisdictional
- Certificate of Authorization (COA) Renewals
- Safety case preparation
- Waiver processing
- One-on-one consulting



SCENE RECONSTRUCTION



CUSTOM TRAINING CLASSES

MATRICE 300 RTK

INTELLIGENCE WITH HIGH-PERFORMANCE.



MATRICE 300 RTK

The M300 sets a new standard for the Public Safety Drone Industry. Offering up to 55 minutes of flight time, advanced AI capabilities, 6 Directional Sensing & Positioning, and more, the M300 RTK sets a whole new standard by combining intelligence with high-performance and unrivaled reliability. The aircraft is IP45 rated and can operate in temperatures from -20 degrees to 50 degrees Celsius. The new M300 also has a new health management system to give agencies peace of mind that their aircraft is in tip-top shape.

IMPROVED TRANSMISSION SYSTEM

The all-new OcuSync Enterprise enables transmission up to 15 km away and supports triple-channel 1080p video. Real-time auto-switching between 2.4 GHz and 5.8 GHz enables more reliable flight near high-interference environments, while AES-256 encryption offers secure data transmission.

MULTIPLE PAYLOAD CONFIGURATIONS

Configure your M300 RTK to fit your mission needs. Mount up to 3 payloads simultaneously, with a maximum payload capacity of 2.7 kg. In addition to the new H20 and H20T, the DJI Z30 and XT2 are both compatible with the M300.

A POWERFUL VISION SYSTEM YOU CAN RELY ON

To enhance in-flight safety and aircraft stability, dual-vision and TOF sensors appear on all six sides of the aircraft, offering a maximum detection range of up to 40m, with options to customize the aircraft's sensing behavior via the DJI Pilot App. Even in complex operating environments, this 6 Directional Sensing and Positioning system helps keep the aircraft and the mission safe.

CALL FOR PRICING!



MATRICE 300 RTK

CUSTOMIZE YOUR MATRICE WITH OPTIONAL PAYLOADS

ZENMUSE XT2

The Zenmuse XT2 is DJI's most powerful camera to date. It incorporates FLIR's industry leading thermal technology with 4K high-definition, creating the most advanced aerial camera on the market. The XT2 quickly transforms aerial data into powerful insights that save time, money - and lives.

ZENMUSE Z30

The Zenmuse Z30 is the most powerful integrated aerial zoom camera on the market with 30x optical and 6x digital zoom for a total magnification up to 180x.

ZENMUSE H20/H20T

The new H20 series from DJI is a state-of-the-art multi-sensor payload. The unique intelligence and integrated design provide unprecedented aerial imaging capabilities for a range of public safety drone applications. Capture everything up close or from a distance, in true living color or thermal. An integrated laser rangefinder (LRF) measures the distance to an object at up to 1200 m away. A powerful, integrated payload that unleashes advanced intelligent capabilities for DJI's industrial drone platforms.



ZENMUSE XT2



ZENMUSE Z30



H20 SIDE FACE



H20T SIDE FACE

ZENMUSE H20/H20T



MAVIC 2 ENTERPRISE

DUAL AND ZOOM MODELS



MAVIC 2 ENTERPRISE

The modular design of the Mavic 2 Enterprise makes it a perfect choice for your department. With a powerful and portable thermal imaging camera your drone can go everywhere you go. Added data security features, ADS-B receiver, and obstacle avoidance can give you more piece of mind while flying.

LEAD WITHOUT LIMITS. WORK BEYOND YOUR BOUNDARIES.

Unlock the possibilities of flight with an extended port that allows you to connect additional devices onto the drone, helping you perform at your best in a variety of daily and critical missions.



MAVIC 2 ENTERPRISE DUAL W/ SPEAKER

CALL FOR PRICING!

EASY TO USE THERMAL CAPABILITIES

DJI MAVIC 2 ENTERPRISE DUAL

VISIBLE AND THERMAL IMAGERY

- Integrated Radiometric FLIR Thermal Sensor
- Adjustable Parameters for Emissivity & Reflective Surfaces
- Multiple Display Modes: FLIR MSX[™], Infrared & Visible

DJI MAVIC 2 ENTERPRISE ZOOM

POWERFUL ZOOM CAPABILITY

- 12 MP 1/2.3" CMOS Sensor
- Dynamic Zoom: 2x Optical 3x Digital Zoom Capability
- Post Analysis Metadata: GPS Timestamping

A REVOLUTIONARY PLATFORM FOR EVERYDAY WORKERS

Designed to empower a new generation of workers, the Mavic 2 Enterprise is the ultimate expression of a tool that delivers beyond expectation to meet current workplace challenges and future demands.

FOLDABLE. COMPACT. PORTABLE.

At 905 g the Mavic 2 Enterprise is rapidly foldable and swiftly slides in the side of your belt package, giving you instant power that's easily accessible and transportable – wherever you operate.



M2E BEACON



M2E SPOTLIGHT

FEATURES

- Max Flight Time: 31 mins.
- Standard zoom camera for both zoom and dual
- Thermal camera included with dual
- Standard spotlight
- Standard beacon
- Standard speaker
- Standard obstacle avoidance system
- Operating Temperature: 14° - 104°F
- Hot Swap speaker, beacon, and spotlight options
- 24 GB internal storage
- 2x digital 2x optical zoom

THERMAL CAMERA SPECS

- Sensor: Uncooled VOx Microbolometer
- Lens: HFOV: 57°
- Aperture: f/1.1
- Resolution: 160x120
- Pixel Pitch: 12 μm
- Spectral Band: 8-14 μm
- Image Size: 640x480 (4:3), 640x360 (16:9)
- Still Photography Modes: Single shot, burst shooting (3/5/7 frames)
- Video Recording Modes: 640x360 @ 8.7fps



AUTEL ROBOTICS EVO II SERIES

MOST CAPABLE FOLDING DRONE ON THE PLANET

EVO II SERIES

The only 8K folding drone on the planet. Capture content at resolutions up to a massive 8000x6000. EVO II comes standard with a 7100mAh rechargeable battery and uses our patented Battlock system to guard against battery ejection in high-speed maneuvers or hard landings. Control your drone up to 9km away, keeping you connected in crowded urban environments and thick forests.

FEATURES:

- 12 optical sensors and 2 sonar sensors creating 360° protection
- Detect hazards up to 30m away and control the speed to avoid collision
- Pro Model has a 1" sensor with 6K
- Dual model has thermal resolution of up to 640x512 by FLIR and an 8K sensor

INCLUDES:

- Batteries
- Prop guards
- Charging hub
- Car charger
- Spare remote
- GPC case
- Live deck

AIRCRAFT SPECS

- Takeoff Weight: 1127g-1192g
- Wheelbase: 397mm
- Max Speed: Standard: 15m/s // Ludicrous: 20m/s
- Max Service Ceiling: 7000m
- Max Flight Time: Hover: 35min // Moving: 40min
- Transmission Type: FCC: 2.4GHz ALink
- Max Transmission Distance: 9km
- Storage: Internal: 8GB Max SD: 128GB
- Battery Type: LiPo 3s
- Battery Size: 7100mAh
- Controller Screen: 3.3in OLED 330 Nits
- Controller Battery: 5000mAh

NEW

CALL FOR PRICING!



DUAL CAMERA



8K CAMERA



6K CAMERA



EVO II



EMILY BY HYDRONALIX

EMERGENCY INTEGRATED LIFESAVING LANYARD

EMILY BY HYDRONALIX

The EMILY platforms are designed as an asset for public safety and homeland security. It offers scene stability in dangerous and hazardous waters by helping the victim and keeping the rescuer on the shore. The EMILY technology complements public safety teams and homeland security personnel by adding valuable, timely resources without adding additional personnel. The key element to this technology is the fact that it keeps the rescuers out of the hazard zone until the scene is stabilized and the victim(s) can be rescued. The fact that this is a battery powered jet boat that is operated and controlled remotely through line of sight technology, the EMILY systems have the ability to penetrate areas/zones that normal watercraft could not access.

FEATURES:

- Weight: 26 lbs.
- Length: 50 in.
- Positive buoyancy: 150 lbs.
- Self-righting
- Perimeter grab rope: 8 ft.
- Waterproof internal modular components
- D-Ring tow line attachments
- Jet pump drive made of aerospace composites and ceramic bearings

INCLUDES:

- Float cover
- Battery charger 2-pack
- Battery module
- Flag
- Boat stand
- Lanyard 2-pack
- Futaba transmitter
- User manual
- 2.4 GHz transmitter controller with amplifier



NEW

EMILY KIT

INCLUDES:

- 2 additional steering arm boot seals
- Electrical anti-corrosion solution
- 3 additional inlet grates
- Flags 3-pack
- Tool kit
- Lanyard 3-pack
- Canvas carry bag
- Additional impeller

SWIFT WATER RESCUE EMILY

INCLUDES:

- SWRE Float Cover
- Life Jacket
- Helmet
- Headlight

MAN OVERBOARD EMILY KIT

INCLUDES:

- MOBE Cover
- 2 additional steering arm boot seals
- Additional inlet grate
- Additional impeller
- Flags 3-pack
- Headlight
- 2000 ft. reel
- Reflective strips
- Navigation lights (Port red light, Starboard green light)



Rescue Reel



EMILY KIT



SWIFT WATER EMILY



MAN OVERBOARD EMILY KIT

CONTACT  LOUVICELLI@DARLEY.COM FOR PRICING